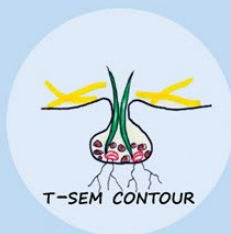


TECHMAGRI



- T-SEM CONTOUR



www.techmagri.com e-mail: **contact@techmagri.com**



T-SEM CONTOUR DESIGN BY TECHMAGRI SINCE 2010

Located in the east of France in a country with lots of hard soils TECHMAGRI has 25 years of experience in min-till and no-till system.

Today, with no ploughing and evolution of agronomy to work with a living soils, we had to develop a Direct drill capable to work, in all conditions and different kind of soils.

Developped with farmers, They are mindful how they can improve health of their soils, in the goal to include turnover of the farm with reducing costs.

With its special combination of opener disc and special tine, T-sem Contour is the solution for the best of your ground.



SOWING UNIT T-SEM CONTOUR®

TECHMAGRI

1 OPENERS DISCS

First Parts in contact with the soil, is mounted on a non stop system with spring and a heavy leg in hard steel to resist in hard soil and stones.

It allows to open furrow to reduce soil movement ,cut crop residues , and to avoid «hair pin effect»

It's possible to adjust the depth of the disc with a clutch , you can set it with precision or to remove it



3 MODELS (Ø 430) :

fit with non maintenance bearings

A- SERRATED for hard soils and and lot's of straw and stubble residues



B- VERSATILE (cf photo)

Polyvalent with straw and wet cover



C- PLATES - cutting along the line



2 INDIVIDUALLY UNIT

Achieves perfect ground adaptation with horizontal arm and spring = ground pressure is regulary on coulters stroke

3 DEPTH WHEEL Ø330x75mm

Can be changed in the side of coulters in moisture ground

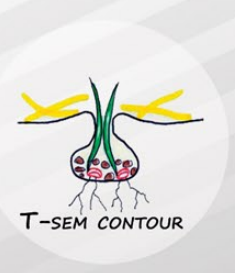
4 PRECISE AND SIMPLE ADJUSTMENT OF THE SOWING DEPTH FROM 0 TO 10 CM (WITH PINS)

4-5 T-SEM SYSTEM

Based on renowned New Zealand T-slot , and redraw by TECHMAGRI , The coulters arm is made from special spring steel. The shoe sheds the vegetation and prunes the roots of any existing vegetation. The seed is placed on the firm base of the T-slot so that it is in good contact with the moisture rising by capillary action. The horizontal slicing action of the wings of the shoe means that each side of the slot falls back after the tine has passed, but the chamber remains slightly open. The micro-environment thus created allows the light and moisture to enter but retains the warmth. The consistent placement of the seed in this "mini-greenhouse" gives optimum conditions for an even germination, and the tilth within permits rapid root development of the young seedlings.



MOUNTED WITH CARBIDE IN FRONT AND UNDER THE TINE



RIGID

T-SEM CONTOUR®

FOLDABLE

3.00 - 3.50 M



- FRONT AND REAR SECTIONS WITH CENTRAL AXLE
- ALTERNATIVE POSITION OF SEEDING UNIT (2 x 2) FOR BEST FLOWING
- 2400 L DOUBLE HOPPER 60-40% - ACCORD TYPE METERING UNIT -
- DEPTH CONTROL WITH ALUMINIUM CLIPS ON HYDRAULIC CYLINDER
- SHORT TURN WITH ARTICULATE DRAWBAR LINKAGE



5.60 - 6.00 - 7.20 - 8.00 M



- SECTIONS WITH SEEDING UNITS ON THE REAR SIDE AND UNDER THE HOPPER
- DOUBLE AXLE FOR STABILITY AND LIMITING SOIL DAMAGE
- ALTERNATIVE POSITION OF SEEDING UNIT (2 x 2) FOR BEST FLOWING
- 4500 L DOUBLE HOPPER 60-40% - RDS TYPE METERING UNIT -
- DEPTH CONTROL WITH ALUMINIUM CLIPS ON HYDRAULIC CYLINDER
- SHORT TURN WITH ARTICULATE DRAWBAR LINKAGE



STANDARD DOUBLE HOPPER
60- 40%



3rd HOPPER
100 OR 200 L



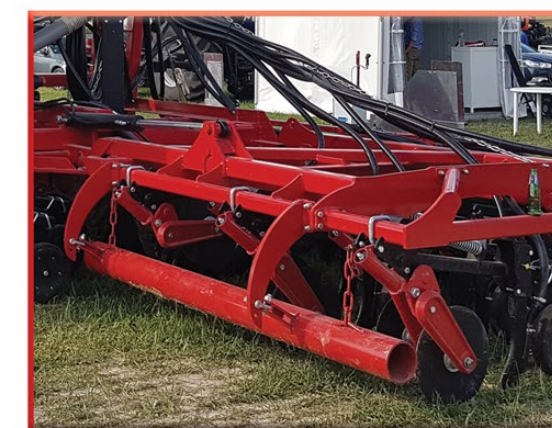
CLIPS TO DEPTH ADJUST



HYDRAULIC FAN



FRONT PIPE Ø 170
(INTO GREEN CATCH CROP)



3D STRAWBAR



MONITOR - FOR METERING UNIT

SEM CONTROL



SEM TRONIC II



SemControl FITTED WITH MECHANIC DRIVING SYSTEM (STEEL WHEEL)

SemTronic II FITTED WITH WITH ELECTRIC DRIVING SYSTEM



IN FIELDS

T-SEM CONTOUR®



DESIGN AND QUALITY MADE BY **TECHMAGRI**



TECHNICAL SPECIFICATIONS

	TSC30D	TSC35D	TSC56D	TSC60D	TSC72D	TSC80D
Working width	3.00 m	3.50 m	5.60 m	6.00 m	7.20 m	8.00 m
Transport width	3.00 m	3.49 m	3.49 m	3.49 m	3.49 m	3.49 m
Hopper (liters)	2400	2400	4500	4500	4500	4500
Coulters Numbers	13	15	24	26	32	34
Wheels	2 X 400/60 - 15.5	2 X 400/60 - 15.5	4 x 11.5/80 - 15.3	4 x 11.5/80 - 15.3	4 x 400/60-15.5	4 x 400/60-15.5
Weight	3300 kg	3500 kg	5600 kg	5800 kg	6600 kg	6900 kg
Horse Power	80-130	90-140	140-200	150-220	170-230	180-250
Metering Unit	double pneumatic	double pneumatic	double pneumatic	double pneumatic	double pneumatic	double pneumatic

OPTIONS

SemControl Monitor

SemTronic II Monitor

ISOBUS Kit (to use on ISOBUS Monitor) instead of Sem tronic II Monitor

Blockage sensor on SemTronic II

400/60x15.5 Wheels instead of 11.5/80x15.3 (on 5,60 et 6,00m)

Additionnal hopper 100L electric driving (0 à 10 kg/ha) (on 3,00 and 3,50m)

Additionnal hopper 200L electric driving (0 à 8 kg/ha) (5,60 to 8,00m)

Additionnal hopper 200L electric driving (10 40 kg/ha) (5,60 to 8,00m)

Front Pipe Ø170mm (into massive green catch crop)

TECHMAGRI
2 grande rue
10140 AMANCE - FRANCE
contact@techmagri.com
Tél : 00 33 325 413 759

www.techmagri.com

Follow us :

